

TIC BRNO



TRIP IDEAS:

Where to go in Brno with kids?



Where to go in Brno with kids?

KIDS ENJOY BRNO

Want to set off with your kids for fun, culture, sport, or education? Get inspired by these tips.

In the centre, you can decode ciphers to solve the Tajemství Staré radnice (Mystery of the Old Town Hall) and climb the tower to see the entire city from above. Then we recommend walking down into the Labyrint pod Zelným trhem (Labyrinth under Vegetable Market), where you'll again enjoy a little mystery. Definitely don't leave out hrad Špilberk (Špilberk Castle), the educational Otevřená zahrada (Open Gardens), Muzeum hraček (the Toy Museum), or Moravská galerie (the Moravian Gallery's playroom).

You can take a trip into space at the Hvězdárna a Planetárium Brno (Brno Observatory and Planetarium), into the world of science at the VIDA! science centrum (VIDA! science centre), and into the world of animals at the Zoo Brno (Brno Zoo). At the Pavilon Anthropos (Anthropos Pavilion), your kids will see a life-size mammoth, and at the Technické muzeum v Brně (Technical Museum in Brno) they'll discover how their grandparents' cars and TVs looked.

Here in Brno, there is a wide range of options. You can also find more at www.gotobrna.cz/en under Go to Brno with Kids.

GIFTS FROM BRNO

You can remember Brno at home with many souvenirs and other gifts. Available at darkyzbrna.cz or TIC BRNO infocentres.



BRNOPAS tourist card

In many places there is a preferential entrance ticket with the tourist card BRNOPAS.

Check the card at the entrance and get a discount.

More information at:
www.brnopas.cz

01 IN THE CENTRE



OLD TOWN HALL RADNICKÁ 8

One of the most remarkable historic buildings in the centre. Today, the Old Town Hall serves mostly for culture. It holds a gallery, an information centre, and a permanent exhibit about the sculptor Anton Pilgram. In summer, you can visit the Křišťálový sál (Crystal Hall), Freskový sál (Fresco Hall), and Klenotnice (Treasury) and climb the 63-metre tower. You'll enter through an arched passage, the portal of

which, with its a legendary crooked pinnacle, is the work of the sculptor Anton Pilgram. The passage is adorned with two reminders of famous legends – a spiked wheel and a crocodile, also known as the Brněnský drak (Brno dragon).

Opening hours at website.

www.gotobrno.cz/en/place/old-town-hall

03



CELLAR UNDER THE NEW TOWN HALL DOMINIKÁNSKÉ NÁMĚSTÍ 1

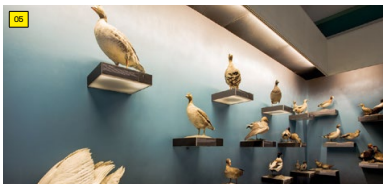
This cellar, built for the royal mintmasters not long after Brno was founded, has been brought to life with a new cutting-edge exhibition devoted to the city's legends. In a series of animated stories you'll meet Lord Šembera or discover more about the Brno dragon and the wheel. See what a medieval market looked like and experience firsthand life during Brno's siege by the Swedes.

After heading back onto the street, you can learn about more legends thanks to the first-person narratives on the website.

WED—MON 9.30^{AM}—6^{PM}
Last entrance at 5.15^{PM}.

www.sklepbrno.cz

05



MORAVIAN MUSEUM: BISHOP'S COURTYARD AND DIETRICHSTEIN PALACE ZELNÝ TRH 8, MUZEJNÍ 2

The Moravské zemské museum (Moravian Museum) is the second largest and also second oldest museum in the country. The oldest part of the museum is the Biskupský dvůr (Bishop's Courtyard). Currently, this building complex holds the Fauna Moravy (Fauna of Moravia) – zoological exhibit with large and realistic dioramas. Kids appreciate the three freshwater aquariums

with fish that can be found in local rivers and reservoirs.

WED—FRI 9^{AM}—5^{PM}
SAT 10^{AM}—5^{PM}
SUN 1^{PM}—5^{PM}

www.mzm.cz

02



LABYRINTH UNDER VEGETABLE MARKET ZELNÝ TRH 21

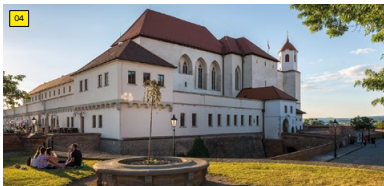
An almost-kilometre-long labyrinth of medieval corridors and cellars. On the guided tour, you'll see the unique and mysterious recesses of these passageways hidden six to eight metres underground. Learn how people used to store food, wine, and beer and how they lit their underground spaces. The tour leads through an alchemist's lab reminiscent of famous doctors, apothecaries, and physicians who worked

in Brno. The local wine tradition is celebrated in an old wine cellar and historic tavern. The shadowy side of life in times long past can be seen in replicas of the city stocks and cages for lunatics.

TUE—SUN 9^{AM}—6^{PM}
First tour always at 9.30^{AM},
last tour at 5.30^{PM}.

www.podzemibrno.cz

04



BRNO CITY MUSEUM: ŠPILEBERK CASTLE ŠPILEBERK 1

This castle was founded in the 13th century by Přemysl Otakar II.

In addition to beautiful views of Brno, the castle also offers a cultural centre – it is the site of the Muzeum města Brna (Brno City Museum) and hosts concerts, theatre performances, and various festivals. Inside the castle grounds, you can hear chimes from 15 bells, enter the lookout

on the castle's corner tower, and explore the baroque chapel consecrated to the Holy Trinity. Another popular tourist destination is the casemates, dark arched corridors wrapped in a number of romantic and frightening myths, or underground reservoirs and bastion – fortification.

Opening hours at website.

www.spilberk.cz

06



MORAVIAN GALLERY IN BRNO: PRAŽÁK PALACE HUSOVA 18

At the Pražákův palác (Pražák Palace), you can visit the kids' playground with a detective office, the reading room with children's books, and other attractions. Artist Vendula Chalánková, known for her works full of humour, was invited to work on the playground. She undertook the creation of an artistic playground and made a number of original designs and happy

figurines now living in the gallery. Kids will enjoy the untraditional slide, which they can take from one floor to another.

WED—SUN 10^{AM}—6^{PM}
THU 10^{AM}—7^{PM}

www.moravska-galerie.cz



OPEN GARDENS
UDOLNÍ 33

Borromeo garden, where you can experience the agricultural cycle from fertilizer to fork.

The Otevřená zahrada (Open Gardens) is the ideal place for relaxation, education, and fun. Come explore the gardens or play a game with your kids at interactive stations which explain the laws of nature. This small urban farm is surrounded by enchanting herbs and a kitchen garden. The farm has fruit, rabbits, chickens, and bees. You'll also find an educational garden about the four elements and a former

Opening hours at website.
November—March is closed.

www.otevrenazahrada.cz



PAPILIONA BUTTERFLY HOUSE
PANSKÁ 393/6

A Caribbean jungle – over 150 m² in size – with hundreds of living, exotic butterflies. You can follow live the emergence of over 60 butterflies from their chrysalises. Hundreds of exotic butterflies will fill about you and you can observe them up close.

MON—SUN 9.30^{AM}—7^{PM}

www.papilionis.cz



08 OUTSIDE THE CENTRE

BRNO OBSERVATORY AND PLANETARIUM
KRAVÍ HORA 2

Monday mornings are usually dedicated to school trips and screenings, while afternoon and evening programmes are open to the general public.

A centre focused on popularizing all sciences, especially the physical sciences and astronomy. During the day, you can freely access the viewing terrace, from which you'll get an almost magical view of Brno. In front of the observatory, you and your kids can try several interactive exhibits, including a kaleidoscope, pixel wall, speaking tube, planetary dynamometer, and spectroscope.

Opening hours based on current programme.

www.hvezdarna.cz



VIDA! SCIENCE CENTRE
KŘÍŽKOVSKÉHO 12

A science amusement park with permanent interactive exhibits for kids and adults. Try presenting a weather forecast, creating your own tornado, flooding a village, or observing the life of ants! You can also set off a hydrogen rocket, capture your shadow, and experience an earthquake. The Science Theatre puts on regular shows full of fun experiments.

MON 9^{AM}—2^{PM}

TUE—FRI 9^{AM}—6^{PM}

SAT—SUN 10^{AM}—6^{PM}

For any changes to the opening hours, check the website.

www.vida.cz



TECHNICAL MUSEUM IN BRNO
PURKYŇOVA 105

Seventeen permanent exhibits will teach you everything about the production of iron, clocks, and cutlery; mechanical music; large steam- and water-powered machines; and much more. Kids are especially engaged by the Interactive Technical Playground, where they can experiment in a fun way with the laws of physics, optics, electricity, and magnetism.

WED—FRI 9^{AM}—5^{PM}

SAT—SUN 10^{AM}—6^{PM}

Last entry 30 minutes before closing time.

www.technicalmuseum.cz



MORAVIAN MUSEUM: ANTHROPOS PAVILION
PIŠARECKÁ 6

This unique museum documents the oldest settlements in Moravia and all of Europe through interactive presentations, modern audiovisual technology, and many dioramas and reconstructions of the environment and lives of Palaeolithic hunters and gatherers. It will definitely grab the kids' attention through the 3.5-metre-tall life-size model of a mammoth with its offspring.

TUE—FRI 9^{AM}—5^{PM}

SAT—SUN 10^{AM}—5^{PM}

www.mzm.cz/pavilion-anthropos



VEVEŘÍ CASTLE
HRAD VEVEŘÍ 1

One of the oldest castles in the entire country, Hrad Veveří (Veveří Castle) lies about 12 kilometres north-west of the Brno centre on a rocky promontory above the Brněnská přehrada (Brno Reservoir). The best views of the castle come on board the boats which cruise the reservoir under the castle. The former royal hunting lodge has long been abandoned. The castle grounds are currently undergoing

long-term renovations, and every year more spaces are made accessible. In addition to the castle itself, visitors are drawn here by many cultural and social events, exhibitions, concerts and tastings.

IV	SAT—SUN	10 ^{AM} —5 ^{PM}
V—IX	TUE—SUN	10 ^{AM} —5 ^{PM}
X	SAT—SUN	10 ^{AM} —5 ^{PM}

www.hrad-veveri.cz



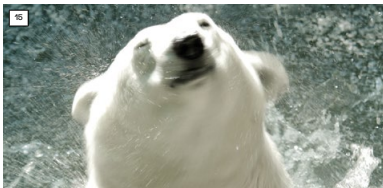
BRNO REZERVÓR
HRÁZNI 2

The Brněnská přehrada (Brno Reservoir) lies on the Svratka River and covers 250 hectares. Both sides are lined by forests, offering opportunities for hiking and cycling in addition to swimming and water sports. In winter when the water freezes, you can also cross on skates or skis. In summer, the Brno Public Transport Authority operates boats across the reservoir connecting the wharves in Bystrc

and Veverská Bítýška. The reservoir is also lined with beaches with many playgrounds and sports areas and places to rent small boats, paddle boats, paddleboards, and more.

Boats operate on the reservoir from April to October.

www.gotobrno.cz/en/place/brno-reservoir



BRNO ZOO
U ZOOLOGICKE ZAHRADY 46

The Zoo Brno (Brno Zoo) lies in the beautiful natural setting. You'll meet animals from around the world – starting with the popular polar bears and Kamchatka brown bears and including two exhibits you can walk through: the bald eagle aviary and the wallaby habitat. And you definitely can't miss the expansive African village. Kids can enjoy a small zoo designed just for them. The children's zoo offers direct

contact with animals and a playground with swings, slides, and things to climb.

XI—II	MON—SUN	9 ^{AM} —4 ^{PM}
III, X	MON—SUN	9 ^{AM} —5 ^{PM}
IV—IX	MON—SUN	9 ^{AM} —5 ^{PM}

Last entry 1 hour before closing time.

www.zoobrno.cz/en



RIVIÉRA AQUATIC CENTER
BAUEROVA 7

An aquatic centre in beautiful natural surroundings not far from the centre. One of the largest aquatic centres in the country, it is open every year from June through August.

The Brno Riviera comprises a 390-metre-long cascade of three new stainless-steel pools in an artificial riverbed made from a former dead-end channel of

the Svratka River. Young visitors enjoy the playground, trampoline, and water slide shaped like a ladybird. They can also try the water attractions.

VI—VIII
For any changes to the opening hours, check the website.

www.rivec.cz



KOHOUTOVICE WATERPARK
CHALABALOVA 2A

A waterpark with many attractions and possibilities. It offers everything necessary for relaxation, enjoying the water, and actively moving: indoor pools, a rooftop pool with a summer sun terrace, a sauna, and a gym. The 90-metre water slide with regular wild-water streams is especially popular among kids. The youngest visitors also enjoy the wading pool with a mushroom-shaped fountain.

MON—FRI	6 ^{AM} —9.30 ^{PM}
SAT—SUN, HOLIDAYS	8 ^{AM} —9.30 ^{PM}

www.aquapark-kohoutovice.cz



BRUNO FAMILY PARK
KIGGINSOVA 2

Adventure and fun indoors and out, this play centre is packed with fantastic attractions: a water world, bumper car racetrack, mini boats, and lots, and lots, more.

MON	2 ^{PM} —7 ^{PM}
TUE—THU, SUN	10 ^{AM} —7 ^{PM}
FRI—SAT, HOLIDAYS	10 ^{AM} —8 ^{PM}

www.brunofamilypark.cz

[GO TO BRNO.cz](http://gotobrno.cz)

south moravian region

BRNĚNSKO
destination managementMINISTRY
OF REGIONAL
DEVELOPMENT CZ

The project Marketing of the Tourist Area Brno and Its Surroundings 2023 was implemented with the support of the state budget of the Czech Republic from the programme of the Ministry of Regional Development.

Publisher: TIC BRNO, p.o.

Text: TIC BRNO, p.o.

Photo: Pocket media s.r.o., P. Gabzdyl, SkyPix, photos from involved institutions, Open Gardens – T. Muchová, JIC, VIDA! science centre

The listed opening hours are accurate at the time of publication.

TIC BRNO, p.o. is financially supported by the City of Brno.

2019, reprint 2023

www.ticbrno.cz

www.gotobrno.cz

www.destinace-brnensko.cz